

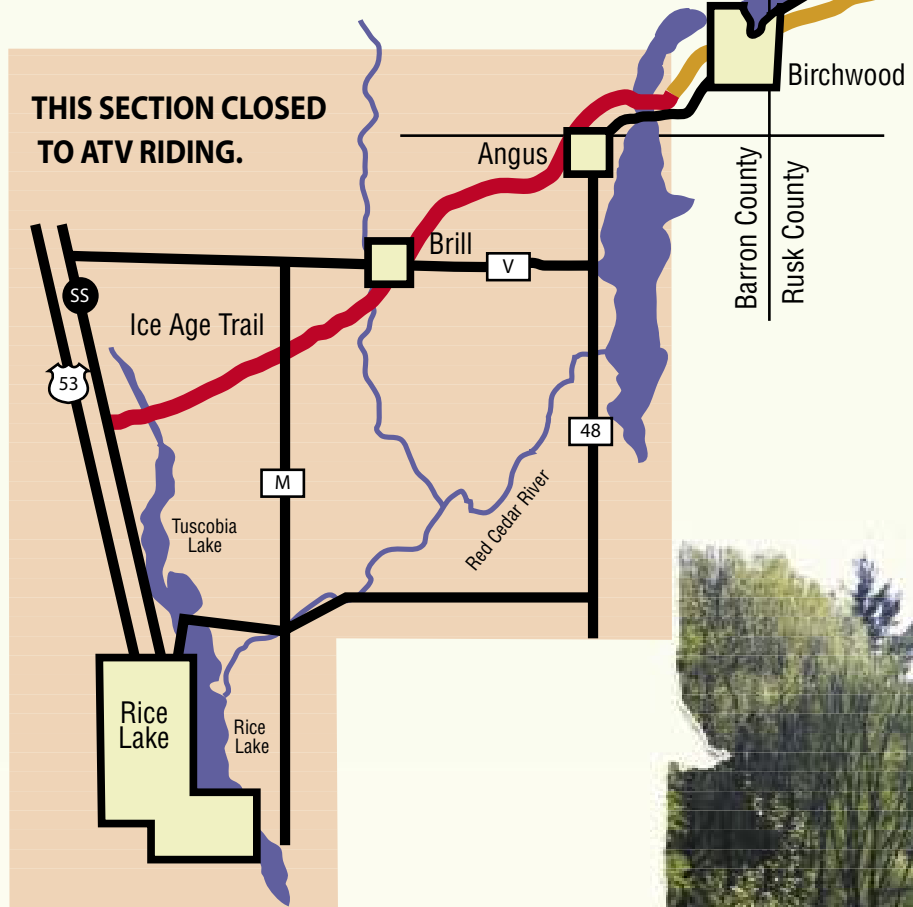
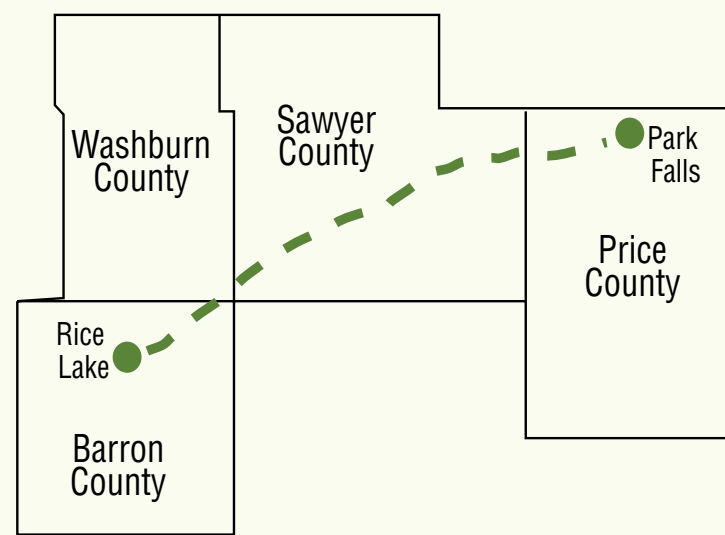
Tuscobia State Trail

ATVing

ATVing is permitted from Park Falls to just west of Birchwood April 15-November 15 and provides a good opportunity to view the wildlife and historical sites along the trail. The map highlights the specific ATV trail. ATV riders are required to stay on the trail.



- Developed trailhead/park
- Open to ATV riding
- Closed to ATV riding
- Campground



Hiking/Horseback Riding

Hiking and Horseback riding are fantastic ways to see all that Tuscobia State Trail has to offer. There is plenty of natural beauty and historic sites, as well as restaurants and retailers along the trail to make a complete vacation. The terrain on the trail does vary, so proceed with caution. It is a good idea to use the contact information to learn more about the portions of the trail you plan to hike or ride.



Canoeing, Kayaking, Fishing

With several waterways located near or along the Tuscobia State Trail, there are plenty of opportunities for canoeing and fishing. The Birchwood area offers especially good trout fishing. The Chippewa River, near the Ojibwa stretch of the Tuscobia is very popular for canoeing and fishing. The Brunet River, located east of Winter offers trout, as well as musky fishing. The numerous low rapids are attractive to many kayakers. Near the Park Falls area, three creek crossings provide fishing and scenic outlook options. The creeks flow into the Flambeau River, a popular canoeing and kayaking destination.



Snowmobiling

Snowmobiling is allowed on the entire length of the Tuscobia State Trail, snow conditions permitting. Please check the web site, www.tuscobiatrail.com or use the contact information for the portion of the trail you are interested in riding. The terrain on the trail does vary, so proceed with caution and ride safely.

www.tuscobiatrail.com



Friends of the Tuscobia Trail is a non-profit organization committed to developing the Tuscobia State Trail as a multi-use trail that can be enjoyed by all. Created in 2001, Friends of the Tuscobia Trail was born out of the need for additional economic and use enhancements. By working with various government agencies, associations and private landowners, Friends of the Tuscobia Trail hope to further develop the trail so it is always available for hiking, ATV and snowmobile use along with other possible uses such as skiing and cycling. Persons interested in learning more about Friends of the Tuscobia Trail and how to get involved are encouraged to visit the web site www.tuscobiatrail.com or call 1-800-762-7179.

Safety Message

The Tuscobia State Trail is a state treasure and should be enjoyed by outdoor enthusiasts of all interests. Please make safety a priority while using the Tuscobia State Trail.

- Follow all regulations by requesting specific trail information for each area as rules can vary.
- Be certain your equipment is in good mechanical condition at all times.
- Wear sensible protective clothing.
- Use proper safety equipment at all times.
- Make efforts to know the terrain by asking others who have traveled on it before or by calling one of the contacts for more information.
- If you choose to use the trail at night, make certain you have proper operating lighting systems.
- Stay on the trail.

Disclaimer:

The Tuscobia State Trail is open to the public, but users must proceed with care as many of the sections remain underdeveloped. Activities such as hunting (during deer gun and late bow season) and bicycling do occur on the Tuscobia State Trail. Cycling however is not encouraged as the trail is not groomed or surfaced and may be rough or soft in many sections of the trail making this potentially unsafe. Mountain bikes are recommended if one participates in this activity. Trail-users need to be aware that the Tuscobia State Trail is a multiple use trail. In order for all users to enjoy the trail, respect others and follow proper trail etiquette.

Welcome...



A mix of history and scenic beauty, the Tuscobia State Trail is a 74-mile abandoned railroad grade, which makes it the longest state trail. Depending on the time of year, section of the trail, and your particular interests, activities on the multiple-use Tuscobia State Trail include ATV riding, snowmobiling, hiking, canoeing, fishing, and bird watching. Running through Barron, Washburn, Sawyer and Price Counties, you can find plenty of activities to keep you busy on the Tuscobia State Trail.

Use this map as a guide to plan your vacation along the Tuscobia State Trail. Many of the communities offer lodging and restaurants, as well as other amenities. For more information regarding the Tuscobia State Trail, visit www.tuscobiatrail.com or call one of the contacts provided.

We invite you to visit the Tuscobia State Trail—

The Tuscobia has a variety of offerings as you travel from one end to the other, through each individual community. Due to the different land uses for the trail, it's history and geography, you could spend a significant amount of time in one section. You may also explore the entire trail, with many amenities and overnight accommodations along the route.

Rice Lake



The western terminus is at Rice Lake, Wisconsin, in Barron County. From the western end to Angus, this stretch of the trail is part of the 1,000-mile Ice Age National Scenic Trail. Rice Lake provides users with a variety of amenities including trail

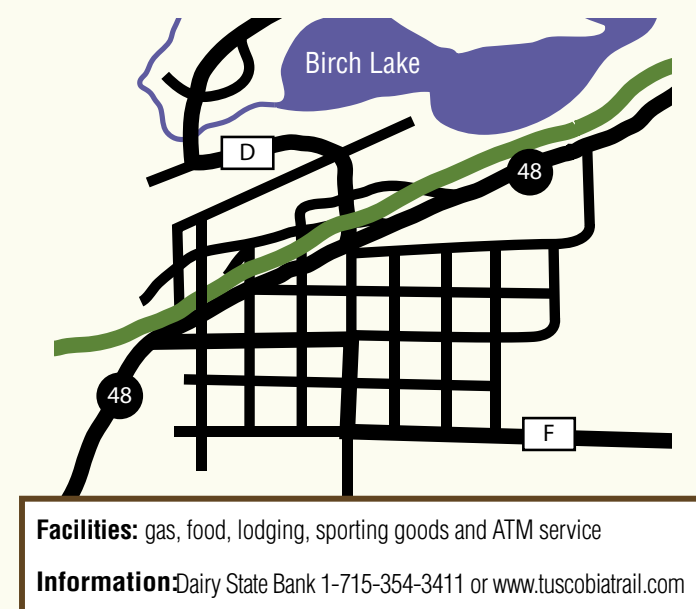
parking, lodging, restaurant, retail and service establishments. For more information, contact the Rice Lake Tourism Commission at **1-800-523-6318**.



Birchwood

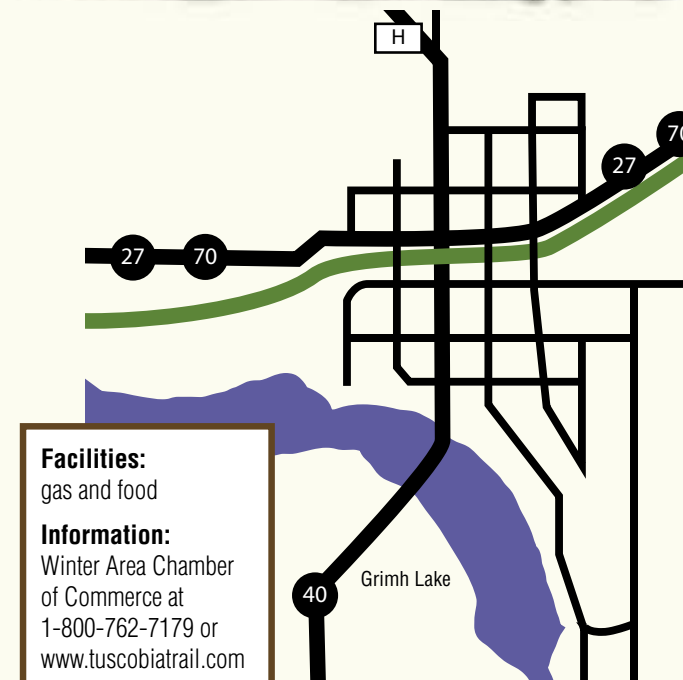


From Rice Lake to Birchwood, you'll travel through open farmland, numerous pothole lakes and creeks with various recreational activities, such as hiking, fishing (particularly trout fishing), and nature studies, as well as several interesting historical sites. Birchwood offers gas, food, lodging, sporting goods and ATM service. For more information contact the Dairy State Bank **1-715-354-3411**.



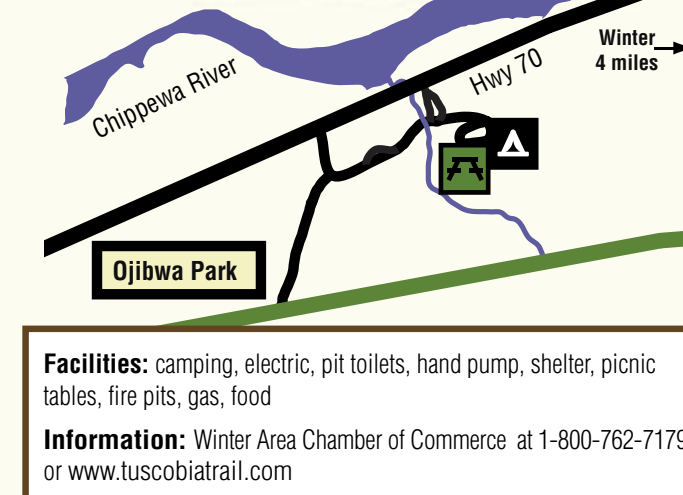
Couderay/Radisson

On this stretch of the Tuscobia, discover the beauty of the Blue Hills: eroded roots of ancient mountains that might have been as high as the Rockies! The Couderay River is also near the trail. Learn more about the history of the railroad and the logging industry at the historical sites when you visit Radisson, which also offers gas and food options. For more information contact the Winter Area Chamber of Commerce at **1-800-762-7179**.



Ojibwa

Take advantage of the scenic Chippewa River Valley, where this portion of the trail veers from being open to forested and has large populations of deer, grouse and songbirds; watch for bald eagles! The Chippewa River is very popular for canoeing and fishing. Ojibwa Park is located at the halfway point directly across the highway from the Chippewa River with facilities including camping, electric, pit toilets, hand pump, shelter, picnic tables and fire pits. Ojibwa also has gas and food options. For more information contact the Winter Area Chamber of Commerce at **1-800-762-7179**.



Tuscobia State Trail



...a trail for all time



www.tuscobiatrail.com

History of the Trail

The Tuscobia Trail is a symbol for the development of Northern Wisconsin and is owned by the Wisconsin Department of Natural Resources. Conceived as a railroad line in 1899, construction lasted for 15 years, concluding in 1914 when the rail-line reached Park Falls. For nearly 70 years, the rail, known as the "Omaha line", served as the lifeblood for the area through logging and farming opportunities, as well as the service industries that developed along the route.

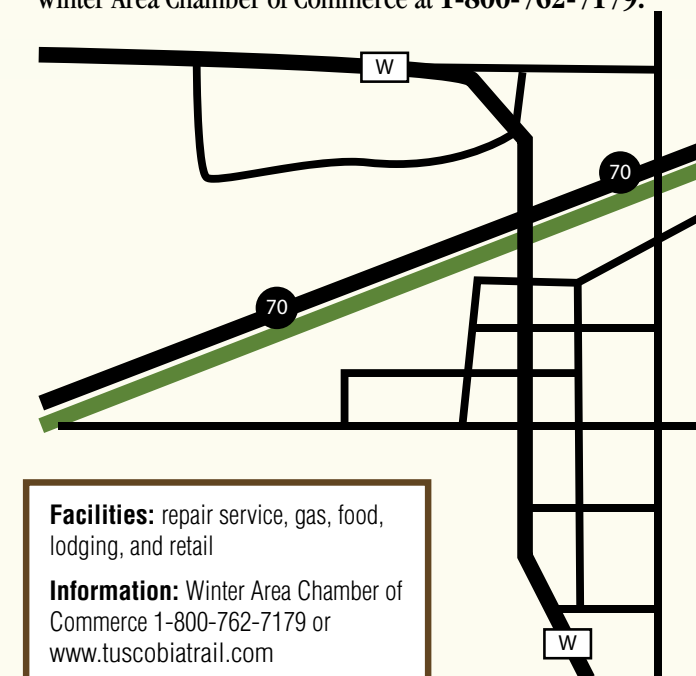
By the 1940s, the decline of the railroad was apparent with logging no longer viable. In 1967, the dismantling of the old wooden bridges began. Citizens surrounding the old railway were interested in turning the grade into a functioning trail system that would serve as a representation of the area's history and provide an opportunity for people to learn about the area and experience the beauty that is available along the route.

Development of the 74-mile Tuscobia Trail to its present use began in 1968.

Indicates connecting routes and trails
 Marks the Tuscobia State Trail

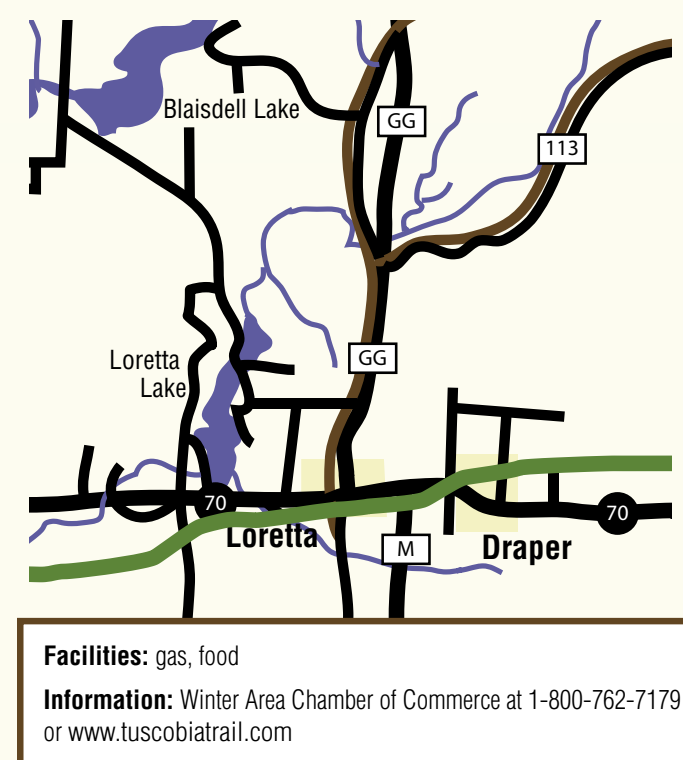
Winter

The Brunet River is located along the Tuscobia Trail east of Winter and offers excellent trout and musky fishing and numerous low rapids. Large old pine stumps suggest the size and frequency of the area's original timbers. Visit the original railroad station in downtown Winter. Winter offers repair service, gas, food, lodging, and retail. For more information, contact the Winter Area Chamber of Commerce at **1-800-762-7179**.



Loretta/Draper

From Winter to Loretta/Draper you enter what was once the heart of the logging industry along the Tuscobia Trail. History will be a constant presence, as you will notice the old railroad ties under the sod of the trail. The Loretta/Draper area offers gas, and food. The Chequamegon National Forest is just north of the Tuscobia and offers camping. For more information, contact the Winter Area Chamber of Commerce at **1-800-762-7179**.



Park Falls

At the eastern end of the trail is Park Falls. You'll find terrain perfect for ATVing and snowmobiling with options for gas, lodging, camping, restaurant, retail and service establishments. The Park Falls-Tuscobia Trailhead County Park offers ample parking, an ATV loading ramp and seasonal flush toilets. Smith Lake County Park & Campground, just west of Park Falls, has direct access to the trail. For information contact the Park Falls Area Chamber of Commerce at **1-800-762-2709** or the Price County Tourism Department at **1-800-269-4505**.



Wisconsin's Longest State Trail
 Barron, Washburn, Sawyer and Price Counties
 ATV riding, Snowmobiling, Hiking, Canoeing, Bird watching
www.tuscobiatrail.com • (800) 269-4505